

# Quarterly Review

Mitchell County Historical Society



## Apple Butter Festival

Seventh annual festival on October 19 was a great success

We had over forty vendors selling all manner of crafts and baked goods. The Creekwalk Park was filled with vendors, visitors, music and food. Randy and Brenda McClellan cooked the Apple Butter while our amazing group of students from local high schools volunteered to assist anywhere needed at the festival. It was so successful, we were **SOLD OUT** of Apple Butter by 1:30pm!

The Historical Society held a raffle for a gift basket filled with Mitchell County items that was won by Patricia and Shepherd Gibbs of Ainsworth, Nebraska who were in the area visiting family.

Check out our [online gallery](#) of photos from the festival.



### Veterans Day, November 11

Join us for our  
November program.  
See page 2.



### 2019 Christmas Ornament

You can purchase this  
year's ornament in the  
office or online. See  
page 3.



### Lydia Holman and Other Programs

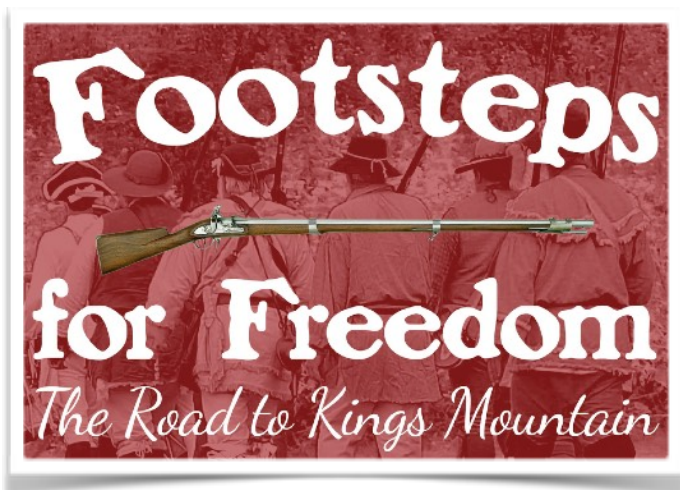
Read about our  
programs for the last  
3 months. See Page 4.

## Footsteps for Freedom: *The Road to Kings Mountain*

Radio program and podcasts created  
by the Historical Society

The Mitchell County Historical Society is pleased to announce our new salute to the Overmountain Men and their success at the Battle of Kings Mountain. We have introduced our new audio program *Footsteps for Freedom: The Road To Kings Mountain*, plus we have a new resource page for the Overmountain Men and the Battle of Kings Mountain available now [on our site](#).

The programs started September 1 and continued through Friday, October 11 on the radio, but continued longer for the podcast. We would like to thank WTOE (1470 AM) Spruce Pine and WKYK (940 AM) Burnsville, for airing



these programs and promoting the history of the Toe River Valley.

You will find links on our website to online resources to learn more about the Overmountain Men, the region that they travelled through, and facts about the actual battle itself. This will be an ongoing resource for individuals interested in the Overmountain Men and for educators.

## FROM THE VAULT - WORLD WAR II VETERAN

Biss Peterson was born August 12, 1920 to Henry and Rittie Peterson in Poplar, Mitchell County North Carolina. He enlisted in the Army on March 6, 1943 for the duration of the war at Camp Croft, South Carolina with the rank of Private. He wasn't long in the European theatre before being detained by Germany and sent to Stalag XI-B Fallingbomel. There he was placed in work camps where conditions were less than humane; POW's were starved and tortured. On April 16, 1945 the camps at Fallingbomel were liberated by British Troops. Peterson received a Purple Heart for his bravery. Learn more about Biss Peterson and other World War II veterans at our **Veterans Program "Triumph Over Tyranny: The Toe River Valley in WWII"** at 4pm on Monday, November 11 at the Mitchell County Senior Center, presented by Jonathan Bennett.







## Mitchell County Historic Courthouse

The first Mitchell County Courthouse, built in 1869, served the county well until 1907 with the grand opening of the new Courthouse which was built on the site of the first courthouse. More than just a courtroom where justice was served, the building was a gateway to the lives of Mitchell County people.

It held records of their births, deaths, marriages, divorces, military service, property sales, and mineral rights. Minutes of the County Commissioners were kept there also. It was where young men reluctantly or bravely went to sign up for the draft and where other young men gathered on their way to war.

Over the years, the bell in the familiar cupola called people to court. It also was rung to celebrate many a New Year's Day as well as the end of the First and Second World Wars. It was used by the Town of Bakersville to call residents to fight fires, including the night in 1922 when much of the town was destroyed and the Courthouse itself was in danger.

The Mitchell County Historical Society Ornament for 2019 depicts the 1907 Historic Courthouse. This is the 8th in a series of ornaments with various historical places throughout the county. You can purchase this and other ornaments in the series [online](#) or stop by the office inside the Historic Courthouse and see the building for yourself. These make great stocking stuffers, ornaments for yourself or for gift exchanges!



---

**Renew your membership or become a member of the Mitchell County Historical Society. Individual memberships for \$20 and Family memberships for \$25 Contact 828-688-4371 or [mitchellnchistory@gmail.com](mailto:mitchellnchistory@gmail.com)**

## Third Quarter Programs

### Looking for Lydia: A Search for Lydia Holman in Mitchell County

The presentation traced the career and life of Lydia Holman, a pioneer public health nurse who worked over 58 years among the people of Mitchell County. Kathy Huie, former Associate Dean of the College of Education at Florida Atlantic University, presented the information on Monday September 16 at the Historic Courthouse.

If you would like to learn more, come by the Mitchell County Historical Society and check out our archives on Lydia Holman.



### Mitchell County Musicians of the 20th Century with Rhonda Gouge

RHONDA GOUGE is no stranger to the musical stages of our mountains where she has roots going back many generations. She featured the music of Red Wilson, Clarence Greene and Steve



Ledford at our Monday, August 19 program at the Historic Courthouse. You can learn more about Red Wilson and Steve Ledford on the Mitchell County Historical Society website at [mitchellnchistory.org](http://mitchellnchistory.org) Search by name.

### An Evening with Calvin Hall: Collector of All Things Mitchell County

Calvin Hall has been gathering items from all over for many years and has the collection to prove it. He generously hosted our Monday, July 15 meeting at his "Museum" and regaled us with stories about his collection. Some of the most notable items in his collection are various railroad equipment, a Clinchfield



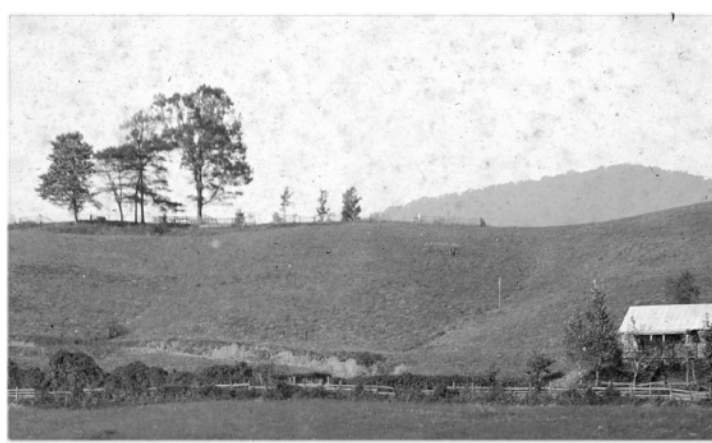
Caboose, the Old Mica Post Office a Country Store and many, many more treasures.

# Penland Cemetery Reclamation Project

Mitchell County Historical Society working on repairs to Penland Cemetery

The Penland Cemetery is located in Bakersville, NC and has been neglected, vandalized and unvisited for years. MCHS has been working toward rectifying this travesty and correcting the disrespect shown to those buried there. In its current state, it is impossible for historians or genealogical researchers to gather information or for relatives to pay proper respect.

Many prominent Mitchell County citizens are buried in the Penland Cemetery including a physician, lawyer and most well known, Reverend Stephen Collis who has been lauded as the catalyst for early church development in Mitchell County. You can learn more about Stephen Collis on our [website](#).



**The word reclamation is used to illustrate that what was once a place of spiritual peace and historical importance, needs to be reclaimed from its near total destruction caused by four wheelers, vandals, and the inevitable claiming of the land by nature. - Dr. Daniel Barron**

This is a multi-phase project and we are currently working on securing enough funds to implement Phase III which entails constructing a road to the currently inaccessible (except by foot) cemetery.

If you would like to donate to this worthy endeavor, you can do so on our [website](#) or send your contributions to:

Mitchell County Historical Society  
PO Box 651  
Bakersville, NC 28705

1

**COMPLETED**  
PHASE I

Permission from the land owners to create access to the cemetery.

2

**COMPLETED**  
PHASE II

Obtaining an easement to the land owner's property from an accessible location.

3

PHASE III

Construct a road to the cemetery to include a small space for parking and turn around.

4

PHASE IV-VI

Clearing timber, repairing damaged markers, add a fence around the cemetery.

# Penland Cemetery Memorials

Berry, Maude  
Berry, Mamie  
Berry, A. Earl  
Berry, Infant  
Black, Lucy May  
Black, Ida Virginia  
Buchanan, Beersheba Collis  
Collis, Rev. Stephen  
Collis, Polly Sparks  
Hackney, Margaret Elizabeth  
Hyams, Homer  
Hyams, Jefferson  
Hyams, Margaret Penland

Penland, Mary Elmira Blalock  
Penland, Leila  
Penland, Robbie  
Penland, Robert N.  
Penland, Elizabeth  
Penland, Esther  
Perry, Margaret M.  
Presswood, Infant  
Pritchard, Birdie  
Quinn, James W. Taylor  
Quinn, S.R.  
Quinn, Dorothy "Dolly" Mace  
Ramsey, F.W.

Ramsey, William A.  
Slagle, Franklin Pierce  
Slagle, Naomi Young  
Stafford, Joseph M.  
Stafford, Elizabeth E. Greene  
Stewart, Blanche E. Buchanan  
Stewart, Elmer C.  
Stewart, Charles  
Wilson, Sarah Cordelia Young  
Wilson, John S.  
Wilson, Infant

---

Mitchell County Historical Society  
11 N. Mitchell Ave. Suite 101  
PO Box 651  
Bakersville, NC 28705